

Slide 1

Pennsylvania's Bureau of
Autism Services Adult
Community Autism Program
(ACAP)

Pennsylvania Department of Public Welfare
Nina Wall-Côté, MSS, LSW, BAS Director

Slide 2

Adult Community Autism Program

- ❖ ACAP is a community based program designed to support adults with an Autism Spectrum Disorder living in the community
- ❖ Services are designed to include meaningful community inclusion and promote independence and self sufficiency
- ❖ Keystone Autism Services (KAS) will be responsible for providing and/or arranging all services for the Participants

Slide 3

Adult Community Autism Program

ACAP:

- ❖ Uses the federal Prepaid Inpatient Health Plan funding model used currently by The Office of Long Term Living.
- ❖ Will serve 200 adult men and women and will initially be available in four Pennsylvania counties.
- ❖ Is assessment and outcome driven
- ❖ Is flexible offering a team approach, which includes the individual, family, KAS and health professionals.
- ❖ Offers a network of resources including physician/physical health services and services to support each individual in their community.

Slide 4

Adult Community Autism Program

To be eligible for ACAP, individuals must.

- ❖ Be twenty-one (21) years old or older
- ❖ Be eligible for Medical Assistance
- ❖ Have a diagnosis of an Autism Spectrum Disorder (ASD)
- ❖ Require an Intermediate Care Facility (ICF) level of care as determined by a physician
- ❖ Be able to live in a community setting (such as the person's home or other family-member's) safely without 16 hours or more per day of awake staffing and supervision

Slide 5

Adult Community Autism Program

ACAP Eligibility (con't)

- ❖ Does not have behaviors that are dangerous to the person or others or that could cause harm to property
- ❖ Live or plan to live in the four counties served
- ❖ Not be enrolled in a Medical Assistance home and community based waiver program at the time the person applies for ACAP
- ❖ Not be enrolled in a Medical Assistance Managed Care Organization at the time of enrollment in ACAP

Slide 6

Adult Community Autism Program

Keystone was immediately attracted to the ACAP Model

- ❖ One agency responsible and accountable
- ❖ One agency coordinating all services
- ❖ Comprehensive services including all health services
- ❖ Flexibility of services-not limited to MA services and definitions
- ❖ Ability to easily increase or decrease services based on need

Slide 7

Adult Community Autism Program

Assembling the Team

- ❖ BAS and Keystone Leadership remain actively engaged
- ❖ Clinical Team
- ❖ Administration/Operations

Slide 8

Adult Community Autism Program

Characteristics of Clinical Program

- ❖ Individualized Assessment
- ❖ Person Centered Support Planning
- ❖ Least-restrictive approach model
- ❖ Application of Evidence Based Practices
- ❖ Strong focus on skill and competency development (self-determination)
- ❖ Evidence based approach to monitoring each person's support
- ❖ Objective and Subjective

Slide 9

Adult Community Autism Program

Staff Competencies

- ❖ Clinical Director
 - Doctoral Level Licensed Psychologist with at least 5 years experience in Autism Spectrum Disorders (ASD) and Functional Behavior Assessment (FBA)
- ❖ Behavioral Health Specialist – Team Leader
 - Masters Level Clinician with at least 5 years experience in ASD and FBA

Slide 10

Adult Community Autism Program

Staff Competencies

- ❖ Behavioral Health Specialist (BHS)
 - ❖ **Masters Level Clinician** with expertise in
 - Functional Behavior Assessment
 - Support Planning and Delivery
- ❖ Community Support Professionals (CSP)
 - **Bachelor Level Clinician** with experience in providing support to individuals with ASD

Slide 11

**BAS Clinical Team's
Role with ACAP**

Slide 12

Functional Eligibility

- Conduct Functional Eligibility in applicant's home
 - Reviews 6 areas of functional living
 - self care, receptive/expressive language, learning, mobility, self-direction, capacity for independent living
 - Applicants must meet at least 3 out of 6 areas to meet functional eligibility

Slide 13

Functional Eligibility

- Next steps depend on assessor decision:
 - Applicant clearly meets functional eligibility, clinical assessor continues meeting with applicant/family to complete other intake documents
 - If the assessor is unsure, the intake visit ends and additional paperwork is not completed.
 - Assessor reviews functional eligibility documentation and notes and renders a decision.
 - If applicant meets functional eligibility, assessor contacts applicant to complete other required documentation

Slide 14

Functional Eligibility

- Applicant clearly does not meet functional eligibility, intake visit ends and additional paperwork is not completed
 - Written functional eligibility report submitted to Pam (or different clinician) for review.
 - Reviewer either confirms or overturns functional eligibility determination

Slide 15

Functional Eligibility

- Required intake documents
 - Acuity Scale
 - MA-51
 - Parental Stress Scale
 - Confirmation of Diagnosis Form
 - CAO Form (if needed)
 - Release of Information
 - Baseline Outcomes
- Clinical team reviews documents to confirm ASD diagnosis and behavioral acuity (less than 16 hours of support and supervision)
- If applicant is eligible, clinical refers to KAS

Slide 16

Collaboration Keystone

- Internal BAS AND KAS Clinical Review
 - Discussion/Review of KAS recommendations for acceptance or denial
 - Dialogue about needs, assessments, and proposed services
 - Discussion of applicants Keystone does not want to enroll
 - Over 16-hour limit
 - Significant Behavioral Needs
 - Questions applicant's Autism diagnosis

Slide 17

Adult Community Autism Program

Assessment

- ❖ Intake
 - > Parental Stress Scale (Berry & Jones, 1995)
 - > Scales of Independent Behavior Revised (SIB-R)
 - > Quality of Life (Schalock & Keith, 2004)
 - > Psychosocial Interview (Life Domains 3.0)
 - > Confirmation of Diagnosis

Slide 18

Adult Community Autism Program

Assessment

- ❖ Functional Behavior Assessment
 - > Functional Assessment Interview (O'Neill et al., 1997)
 - > Screening Tools (e.g. MAS, FAST, QABF)
 - > ABC data collection by family and other supports
 - > Direct Observation across settings, conditions and support type by ACAP Clinicians

Slide 19

Collaboration with Keystone

- Attend weekly meetings with ACAP team and Keystone to discuss
 - Participant-related issues
 - Status of applications
 - HCSIS
 - Trainings
 - Any misc. topics as needed

Slide 20

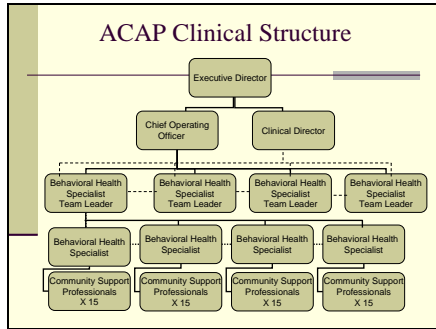
Incident Management

- 1st step- Review First Section Submission
 - Clinical will review within 24-hours (required)
- 2nd step- Review Final Section of Incident Review
 - Who reviews final section will be determined by type of Incident
 - Regional Office Review
 - Joint Review (Clinical and RO)
 - Collaboration with KAS may occur

Slide 21

Primary Category	Secondary Category	RO Review	Joint Review
Emergency Room Visit	Behavioral		X
Emergency Room Visit	Illness-new	X	
Emergency Room Visit	Injury accidental	X	
Emergency Room Visit	Injury individual to individual		X
Emergency Room Visit	Injury resulting from restraint		X
Psychiatric Hospitalization	Involuntary		X
Psychiatric Hospitalization	Voluntary		X
Law Enforcement Activity	Moving violation	X	
Law Enforcement Activity	Site crimes (vandalism, break-in)	X	
Law Enforcement Activity	Volunteer		X
Misuse of Funds	Individual to Individual	X	
Misuse of Funds	Other	X	
Neglect	Failure to provide needed care		X
Neglect	Failure to provide other needed supervision		X

Slide 22



Slide 23

Adult Community Autism Program

Important Tools

- ❖ Person Centered Planning
- ❖ Structured Behavior Support
- ❖ Structured Crisis Intervention Plans
- ❖ Medication Therapeutic Management Plans
- ❖ Ongoing assessment of progress and barriers to progress
- ❖ Ongoing flexibility in adjusting types and duration of services

Slide 24

Adult Community Autism Program

Outcomes

- ❖ Increases in:
 - Independence and Social Skills
 - Parental and Individual Quality of Life
 - Involvement in work / volunteer activities
 - Knowledge about the population of independent and semi-independent adults with ASD
 - Living situations
 - Level of adaptive behavior functioning
 - Behavioral and Social Challenges
 - Degree of Community Involvement

Slide 25

Adult Community Autism Program

Outcomes

- ❖ Decreases in
 - Parental Stress
 - Law Enforcement Involvement
 - Psychiatric Emergency Room care
 - Psychiatric Inpatient Hospitalization
 - Crisis Intervention Plan use
 - Mental Health Crisis Interventions

Slide 26

Adult Community Autism Program

Anticipated Challenges

- ❖ Matching assessment to services and service intensity
- ❖ Identifying and creating employment and volunteer opportunities

Slide 27

Contact Us

FOR MORE DETAILS ON OUR PROGRAMS OR INITIATIVES:

- Visit our General Website: www.autisminpa.org
- Visit our Training Website: <http://bastraining.tiul1.org>
- Email us: DPW-AutismOffice@state.pa.us
